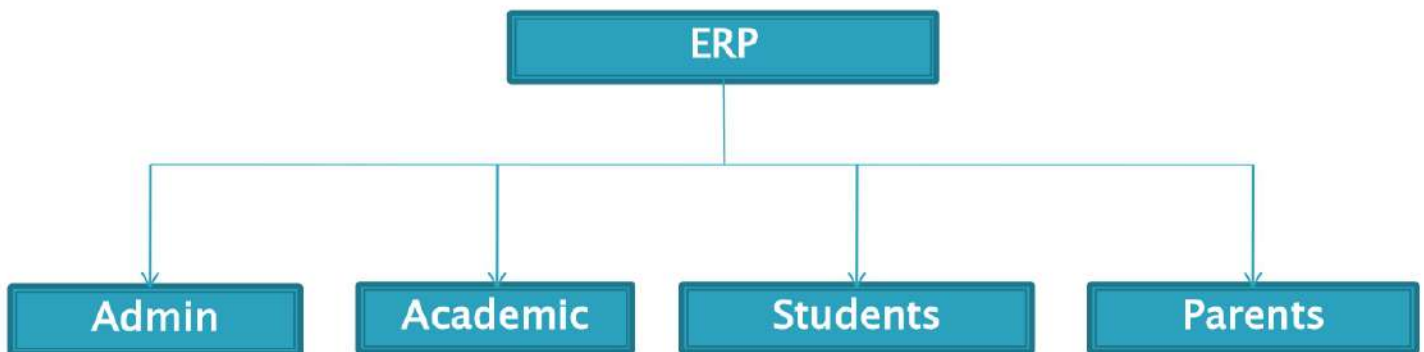


# ABHILASHI UNIVERSITY



**ERP DOCUMENT**

❖ ERP – “ERP in an Institute is not just an application but a relation between the Institute with – Institute, Students, Parents”



# LAYOUT OF ERP

ADMIN PANEL

ACADEMIC

Accounts

EXAMINATION

HoD

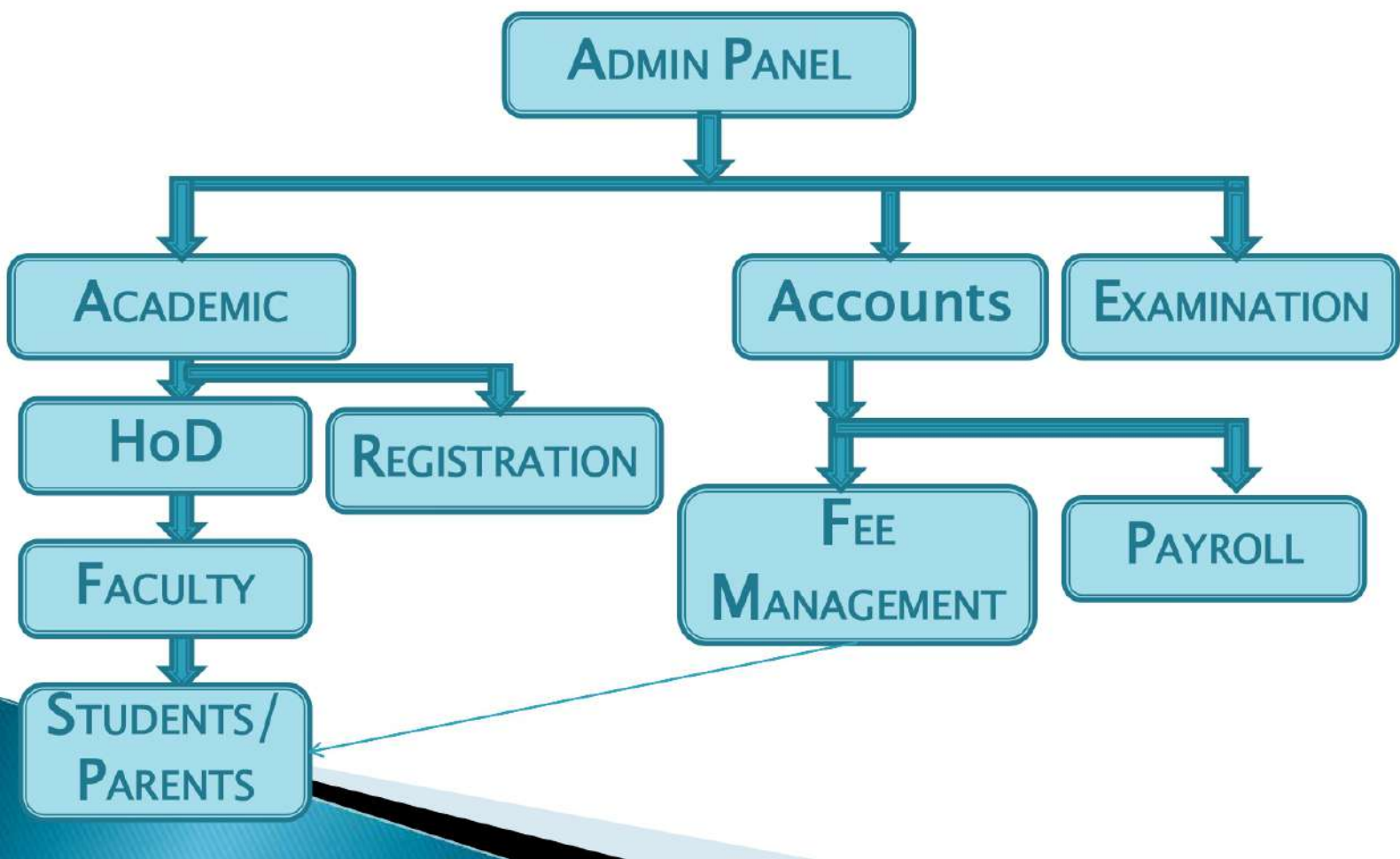
REGISTRATION

FACULTY

FEE  
MANAGEMENT

PAYROLL

STUDENTS/  
PARENTS



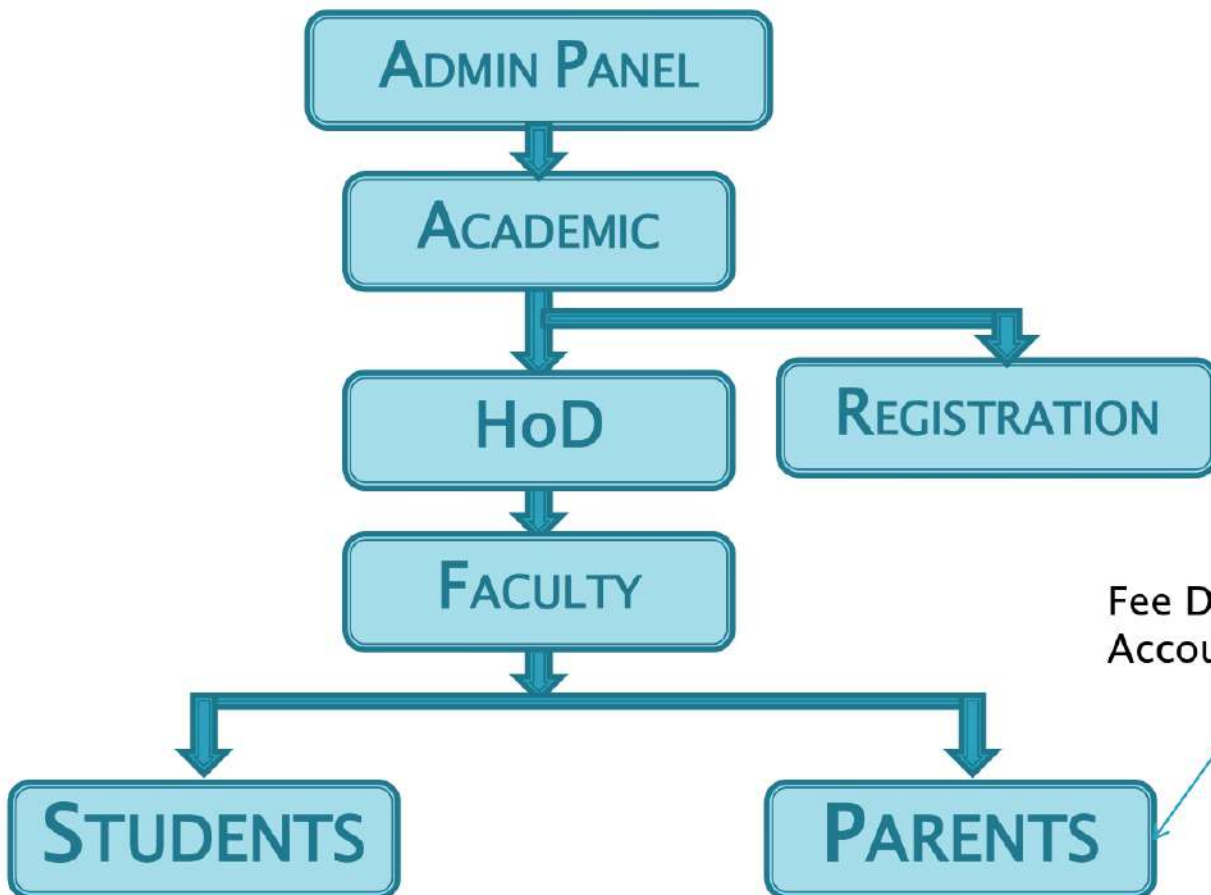
# FUNCTIONS of ERP SOLUTION

- ❖ ERP Solution Integrates Complete Data and Processes of an Educational Institution into a Unified System.
- ❖ Centralizing the Complete Database
- ❖ Easy Connectivity With All The Departments of the Institution
- ❖ Its an Integrated Educational Resource Program.
- ❖ This Software is Customizable as per the Requirement of the Institutes.
- ❖ It Provides Complete Automation Of Staff Administration.

# FUNCTIONS of ERP SOLUTION

- ❖ It Eases Budget Preparation and Financial Planning.
- ❖ Compatible on LAN as well as on Web.
- ❖ The Manual Handling of Institution is a Daunting Task and Prone to Errors.
- ❖ It is Extremely Easy and Efficient to Operate
- ❖ Has Inbuilt Database Back Up Facility for Safety and Reliability.
- ❖ It Helps you to Minimize Repeated Works and Take Care of Complete Functionality of Your Institution.

# CATEGORIZATION



Fee Details form  
Account Dept.

## ADMIN PANEL

- ❖ Upload Student Profiles
- ❖ Upload Staff Details
- ❖ Assign Subjects to Different Semesters
- ❖ Assigning Teachers to Subjects
- ❖ Upload Circulars/Reminders
- ❖ Syllabus
- ❖ Books and Articles
- ❖ Online Admissions
- ❖ Tracking of Admissions
- ❖ Tracking of Staff Lectures



SEARCH

PERSONAL DETAILS

QUALIFICATION

ENTRANCE EXAM DETAILS

DOCUMENTS

DECLARATION

OFFICE USE

PROSPECTUS SALE

REPORT

## Maharaja Agrasen University Admissions 2014-15

Application Date :

Select Select Select  
[mm/dd/yyyy]

Assign Course :

Select

Assign Branch :

Select

Report Type :

Personal Details

Search

Report

Add

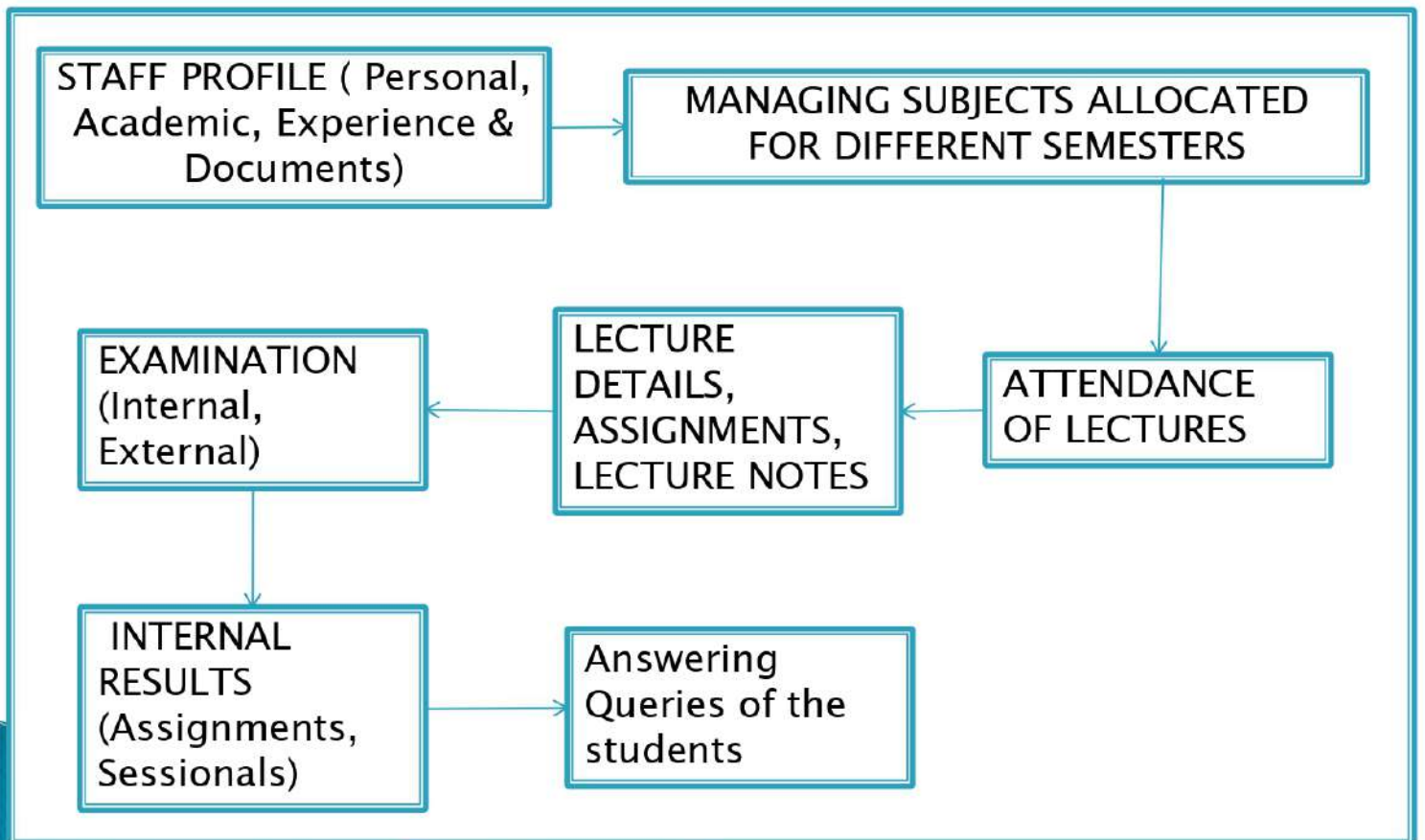
Admission Date	Name	Course	Branch	Edit	Print
Nov 30 2014 12:00AM	Anoop Sharma	MBA-1		Select	View
Nov 30 2014 12:00AM	Bhag Singh	MBA-1		Select	View
Nov 30 2014 12:00AM	Deliant Kaur	MBA-1		Select	View



## REGISTRATION/ADMISSION/ STUDENT DETAILS

- ❖ Registration Report
- ❖ Enquiry/Counseling
- ❖ Course Wise Registration
- ❖ Session Wise Registration
- ❖ Semester Wise Registration
- ❖ Exporting Data in Excel
- ❖ Student Document Report
- ❖ Documents Uploaded
- ❖ Utility (Email/SMS)

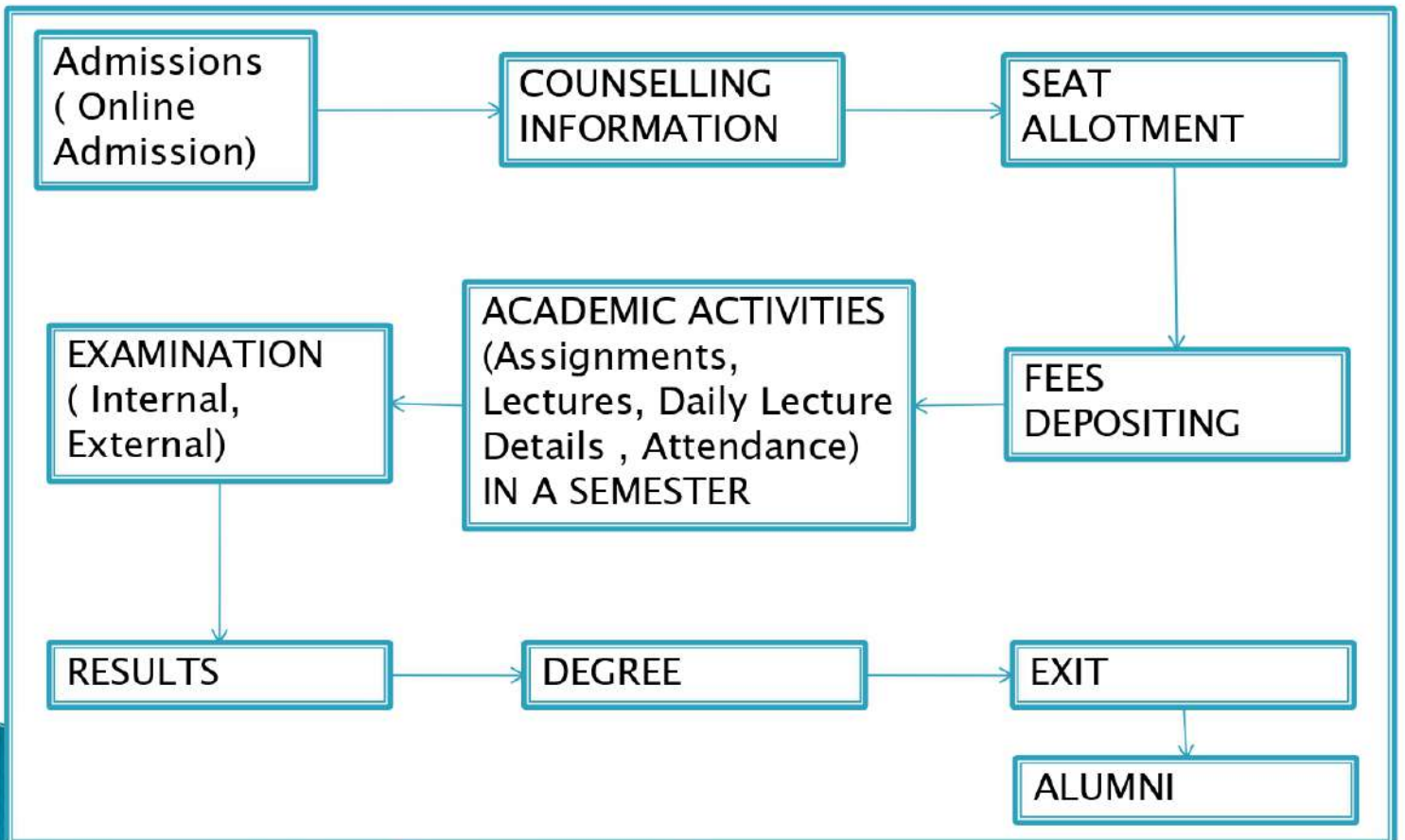
# ERP SOLUTION RELATION WITH TEACHER



## TEACHER PANEL

- ❖ Profile Details
- ❖ Upload Assignments
- ❖ Communicate with the Class / Semester Assigned to Them
- ❖ Upload Marks
- ❖ Upload Attendance
- ❖ Remarks
- ❖ Syllabus
- ❖ Internal Assessment
- ❖ Staff Diary

# ERP SOLUTION RELATION WITH STUDENTS/PARENTS



## STUDENTS/PARENTS PANEL

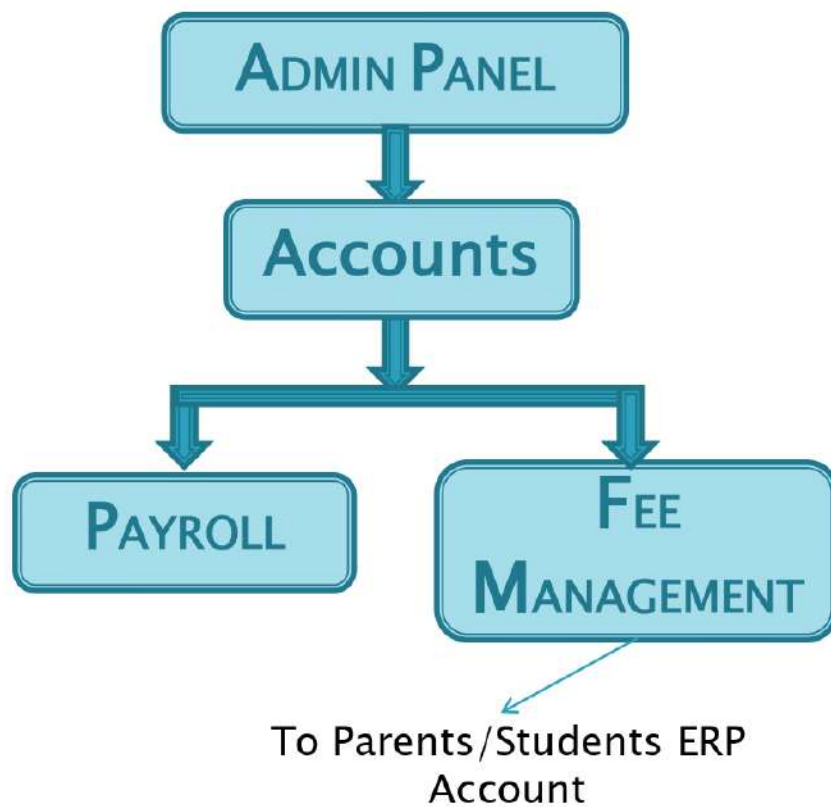
- ❖ Personal Details
- ❖ Able to Get the Details of the Attendance
- ❖ Syllabus
- ❖ Teacher Diary (Topic Covered on Daily Basis, Home Work)
- ❖ Internal Assessments
- ❖ Teacher Remarks (Remarks Against Student Performance and Behavior)
- ❖ Assignments (Upload and Download)

Continue...

## STUDENTS/PARENTS PANEL

- ❖ Batch Mate Details
- ❖ Staff Details
- ❖ Results
- ❖ Communicate with the Lecturers through Email
- ❖ Fee Details
- ❖ Reminders/Circulars
- ❖ Documents

# CATEGORIZATION





## PAYROLL

- ❖ Categorization of Salary
- ❖ Salary Register
- ❖ Pay Slips
- ❖ EPF Details
- ❖ Deduction and Extra Allowances Report Staff Wise
- ❖ Attendance Management (Staff & Students)
- ❖ Monthly Attendance Report And Attendance Summary
- ❖ Employee Details
- ❖ Exporting Data in Excel

## FEE MANAGEMENT

- ❖ Fee Transactions on Instalment Basis as well Under One Category
- ❖ Fee Mapping Course Wise Under Different Fee Heads
- ❖ Fee Collection Details Date Wise, Course Wise and Session Wise
- ❖ Defaulters Report
- ❖ Balance Fee Details
- ❖ Student Final Settlement Details

# CATEGORIZATION

ADMIN PANEL



EXAMINATION

# RESULTS/EXAMINATION

- ❖ Test Wise Marks
- ❖ Assignment Marks
- ❖ Internal Assessment
- ❖ External Marks
- ❖ DMC printing
- ❖ Exporting Data in Excel

## BENEFITS OF USING ERP SOLUTION

- ❖ Improved Services to Students, Faculty and Staff Including Alumni, Parents Of Students, Donors and Job Applicants.
- ❖ Efficient and Effective Allocation of Scarce University Resources.
- ❖ Reduce Paperwork and Improve Operational Efficiencies.
- ❖ Helps in Managing the Universities Assets in an Efficient Manner.

# BENEFITS OF USING ERP SOLUTION

- ❖ Improve Cooperation and Coordination Between Offices.
- ❖ Improve Understanding and Documentation of University Processes.
- ❖ Increasing Efficiency and Effectiveness Of Business Processes Which will Enable the University to Achieve its Business and Administrative Objectives
- ❖ Enforcing University Policy and Procedures





# Abhilashi University

✉ regabhilashi@gmail.com  
☎ +91-9805613939, 01907292611



Admin Login



Student Login



Parent Login



Staff Login

FOR TECHNICAL QUERIES CONTACT US AT :

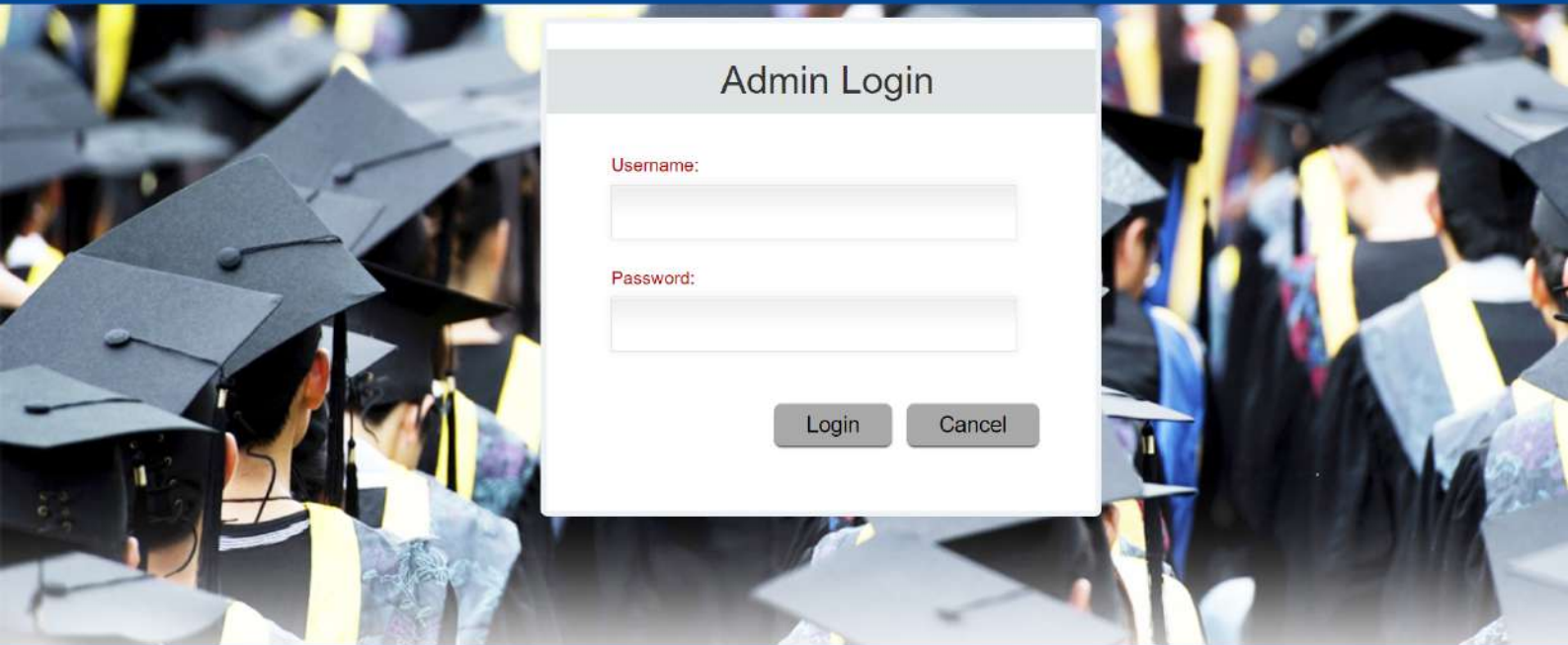
+91-8894399919





# Abhilashi University

✉ regabilashi@gmail.com  
☎ +91-9805613939, 01907292611



### Admin Login

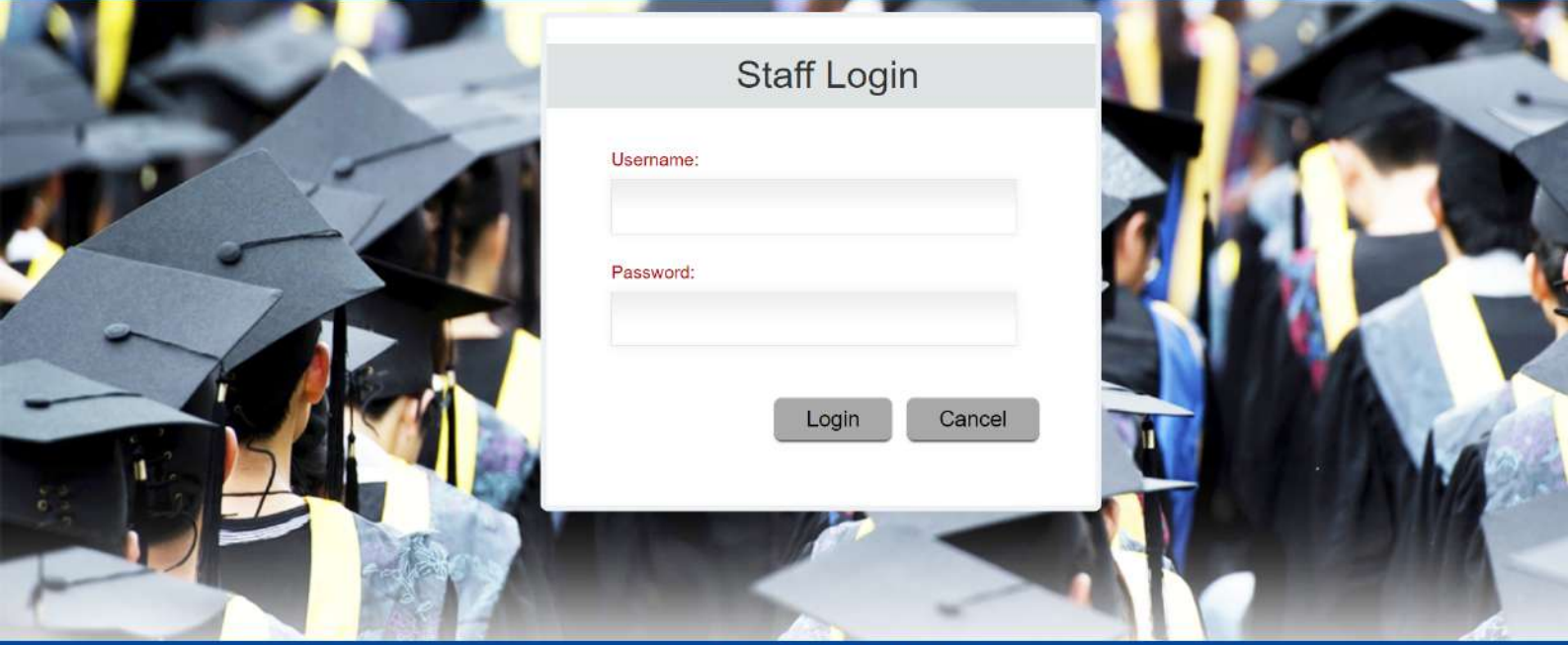
**Username:**

**Password:**



# Abhilashi University

✉ regabilashi@gmail.com  
☎ +91-9805613939, 01907292611



### Staff Login

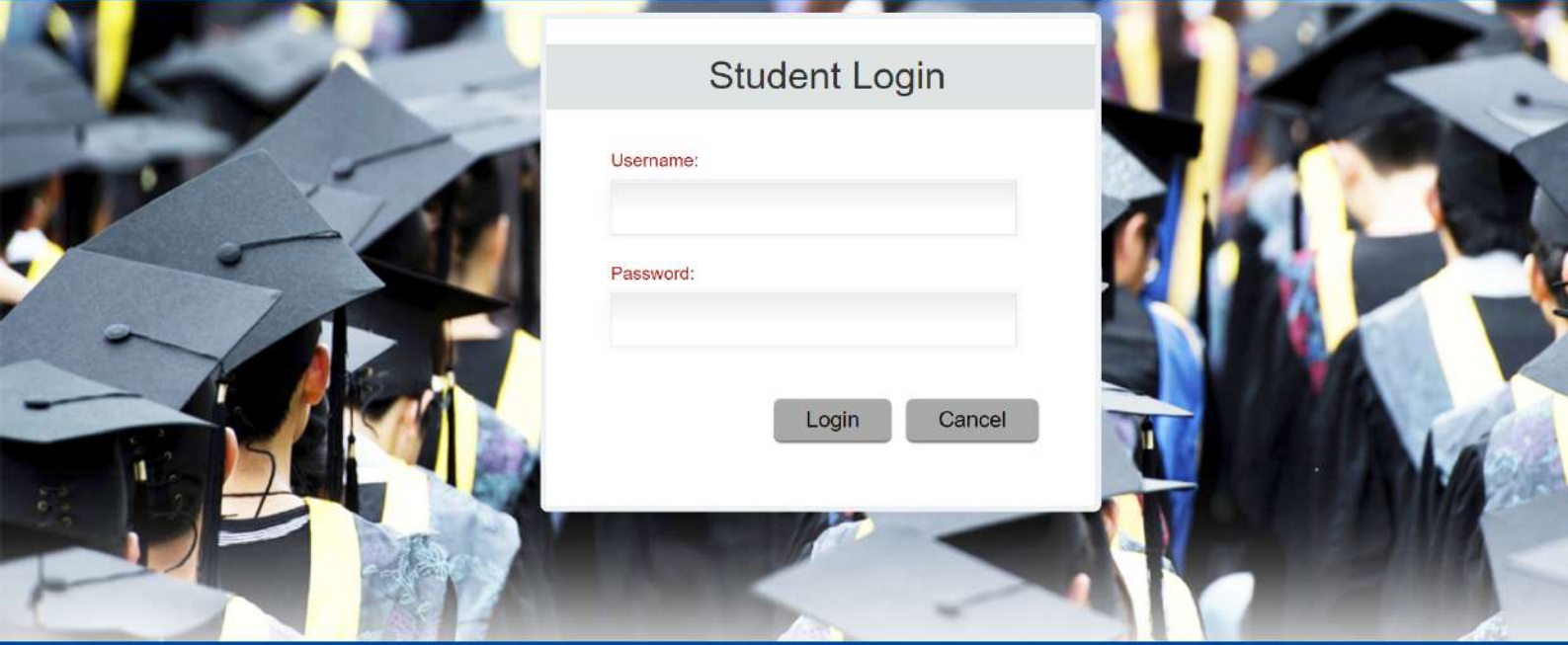
**Username:**

**Password:**



# Abhilashi University

✉ regabhilashi@gmail.com  
☎ +91-9805613939, 01907292611



### Student Login

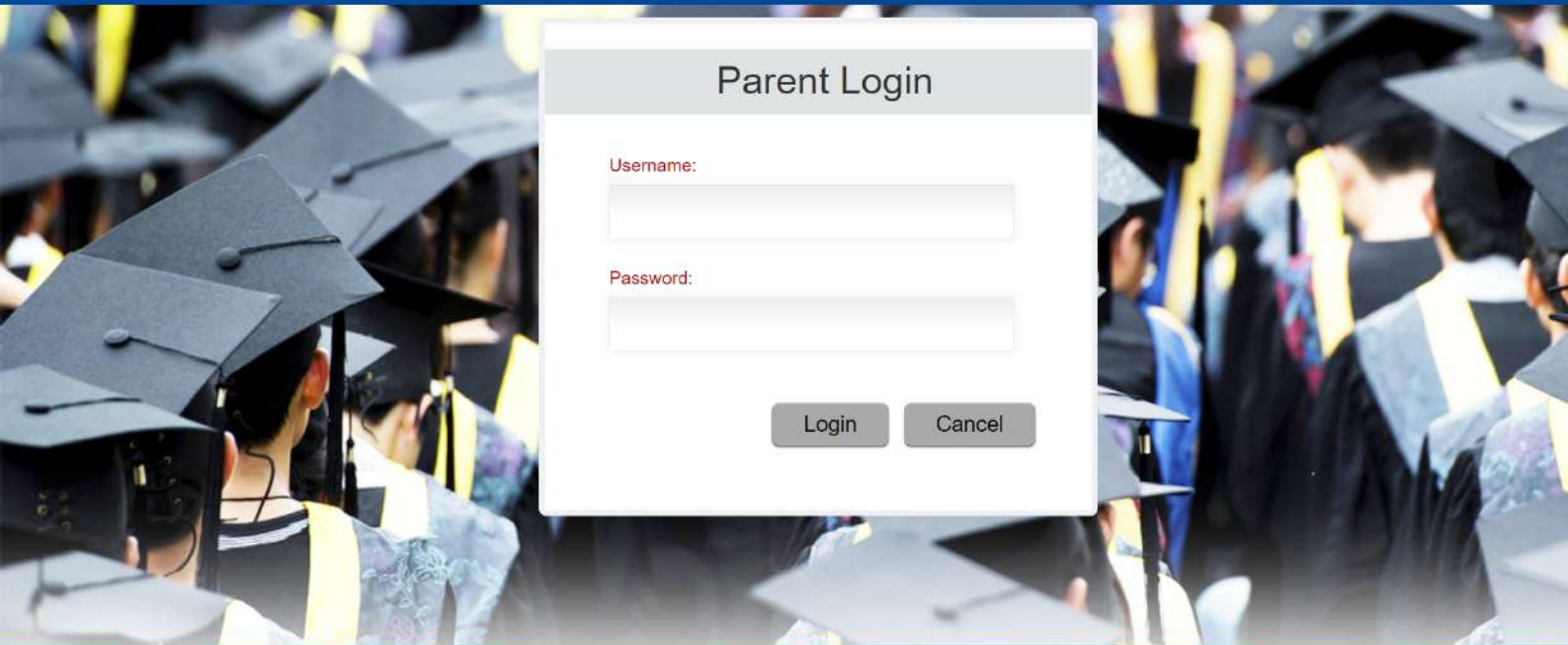
**Username:**

**Password:**



# Abhilashi University

✉ regabilashi@gmail.com  
☎ +91-9805613939, 01907292611



### Parent Login

**Username:**

**Password:**